



Metal Jacketed Gasket



DESCRIPTION

Metal Jacketed gaskets consist of a metallic outer shell with either a metallic or non-metallic compressed fibre filler. The filler material gives the gasket resilience, while the metal jacket protects the filler and resists pressures, temperatures and corrosion.

APPLICATIONS

Metal Jacketed Gaskets are suitable for be used on boilers, heat exchangers, narrow surface sealing and applications where high temperature gas is the fluid. The metal jacketed gasket increases the stability of the joint and reduces its strength.

Offers high chemical resistance at wide range of fluids being possible with right material selection.

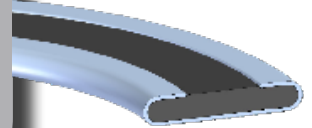
There is a wide range of available materials to suit specific temperatures and required corrosive medium:

METALLIC	<ul style="list-style-type: none">• Soft Iron• Carbon Steel• Stainless Steel• Inconel	<ul style="list-style-type: none">• Nickel• Aluminum• Brass• Copper
NON METALLIC	<ul style="list-style-type: none">• PTFE	<ul style="list-style-type: none">• Expanded Graphite• Ceramic

METAL JACKETED GASKETS TYPES

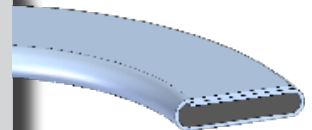
ICP MJ100

The most basic form of Metal Jacketed Gasket, with coverage on one face and both edges. Is ideally suited for comparatively narrow flange widths in circular and non circular configurations.



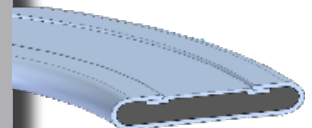
ICP MJ101

Single Jacketed gasket with overlap, where the filler is completely enclosed on the inside and outside diameters and on both contact surfaces. Suited for high temperature applications like boilers, compressors, pumps and diesel and gasoline engines.



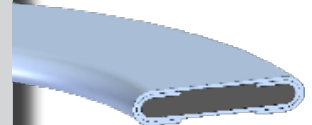
ICP MJ110

Double Jacketed Gasket, where the filler is completely enclosed by a two piece metal jacket, which covers both the inside and outside diameters and both contact surfaces. Suited for high pressure and temperature for use on boiler and heat exchanger applications.



ICP MJ112

Double Jacketed Gasket wrapped in two reversed metallic parts. Suited for high pressure and temperature for use on boilers and heat exchanger applications.



ICP MJ114

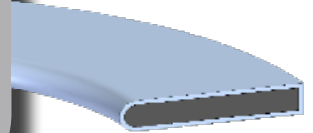
Double Jacketed Corrugated gasket is an improvement on a flat gasket, where the corrugations provide a higher recovery. It also provides the advantage of reducing the contact area of the gasket, enhancing its compressive characteristics.



METAL JACKETED GASKETS: TYPE OF PROFILES

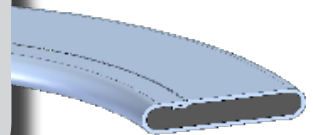
ICP MJ120

ICP MJ120 Gasket is composed of filler material enclosed in a metal jacket, which covers the inside diameter of the gasket and completely covers the sealing faces on both sides. Ideal for small diameter narrow flange, circular or non-circular applications.



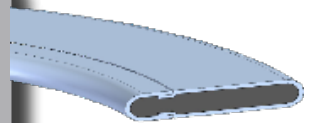
ICP MJ121

Identical to ICP MJ120 except the inside diameter of the gasket is protected by overlapped construction of the two-piece metal jacket. It is ideal for wide or irregular-shaped flanges in virtually any diameter.



ICP MJ122

Identical to ICP MJ120 except the inside diameter of the gasket is protected by overlapped construction of the three-piece metal jacket. It is ideal for wide or irregular-shaped flanges in virtually any diameter.



ICP MJ130

Corrugated Metal Gasket where the corrugations provide a multiple seal across of the gasket. Suited for high temperature applications and applications involving steam, water, gas, oil etc.



ICP MJ131

Single Jacketed Gasket composed by a Corrugated Metal Gasket enclosed in a flat metal jacket that covers the inside and outside diameters of the gasket and the contact surface on one side.



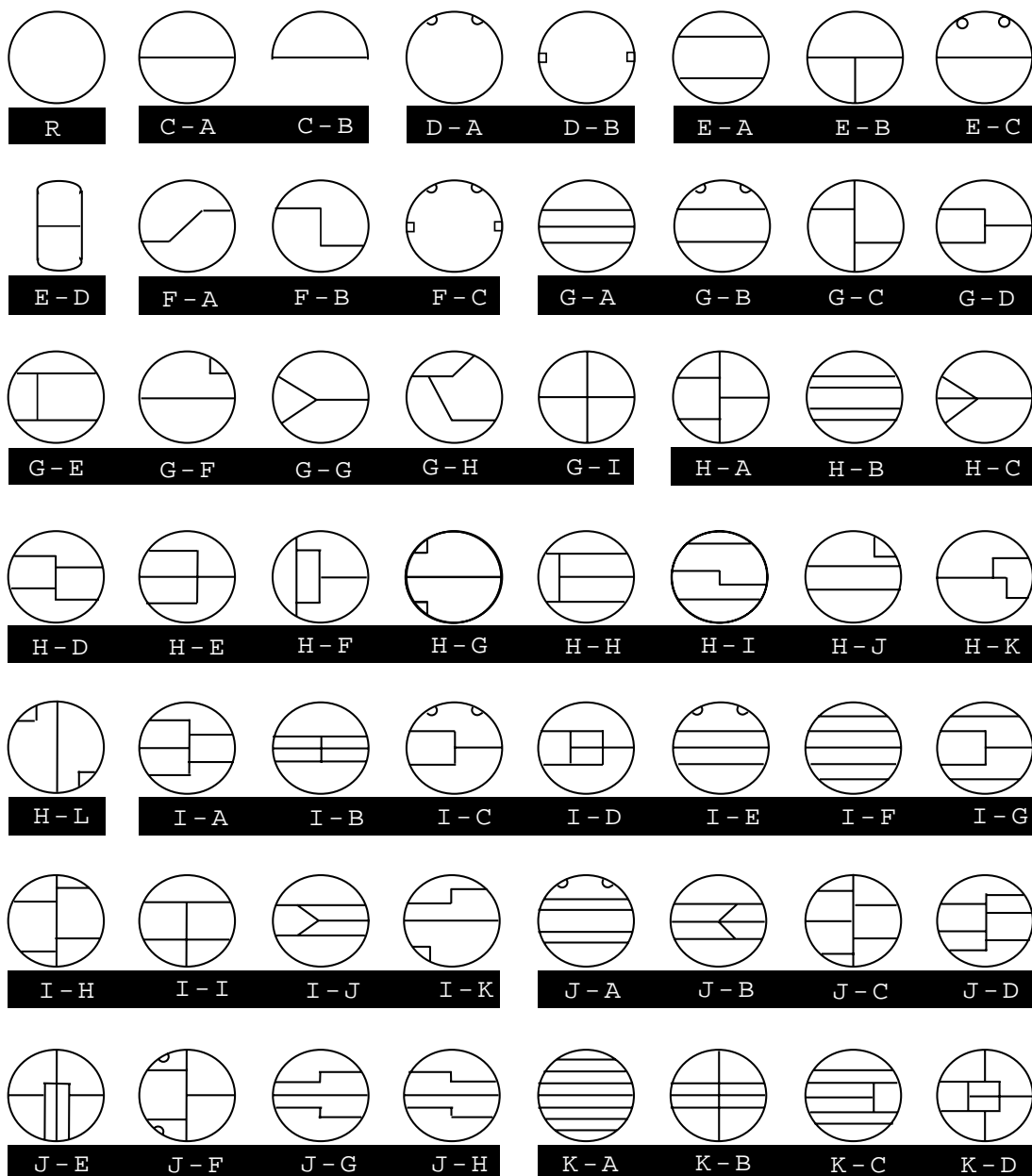
ICP MJ132

Single Jacketed Gasket composed by a double Corrugated Metal Gasket enclosed in a flat metal jacket that covers the inside and outside diameters of the gasket and the contact surface on one side.



HEAT EXCHANGER CONFIGURATIONS

CALVOSEALING offers the possibility to manufacture the following heat exchanger configurations:



Dimensions: Metal Jacketed Gasket



METAL JACKETED GASKET DIMENSION TO EN 1514-4
(used with EN 1092 flanges)

6

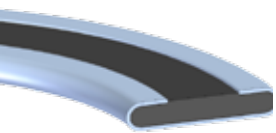
METAL JACKETED GASKET DIMENSION TO ASME B16.20
(used with BS 1560 & ASME/ANSI B16.5 flanges)

7

METAL JACKETED GASKET DIMENSION TO ASME B16.20
(used with ASME/ANSI B 16.47 Series A flanges)

8

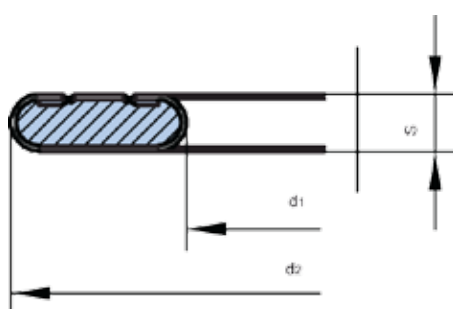


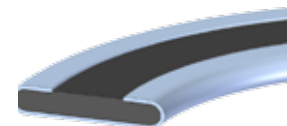


METAL JACKETED GASKET DIMENSION TO EN 1514-4

(used with EN 1092 flanges)

DN (mm)	d ₁ (mm)	OUTSIDE DIAMETER - d ₂ (mm)					
		PN 10	PN 16	PN 25	PN 40	PN 63	PN 100
10	18	48	48	48	48	58	58
15	22	53	53	53	53	63	63
20	27	63	63	63	63	74	74
25	34	73	73	73	73	84	84
32	43	84	84	84	84	90	90
40	49	94	94	94	94	105	105
50	61	109	109	109	109	115	121
65	77	129	129	129	129	140	146
80	89	144	144	144	144	150	156
100	115	164	164	170	170	176	183
125	141	194	194	196	196	213	220
150	169	220	220	226	226	250	260
200	220	275	275	286	293	312	327
250	273	330	331	343	355	367	394
300	324	380	386	403	420	427	461
350	356	440	446	460	477	489	515
400	407	491	498	517	549	546	575
450	458	541	558	567	574	-	-
500	508	596	620	627	631	660	708
600	610	698	737	734	750	768	819
700	712	813	807	836	-	883	956
800	813	920	914	945	-	994	-
900	915	1020	1014	1045	-	1114	-

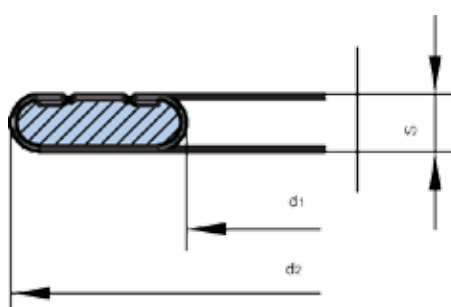


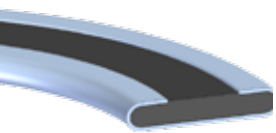


METAL JACKETED GASKET DIMENSION TO ASME B16.20

(used with BS 1560 & ASME/ANSI B16.5 flanges)

NPS (inch)	d_1 (mm)	OUTSIDE DIAMETER - d_2 (mm)						
		Class 150	Class 300	Class 400	Class 600	Class 900	Class 1500	Class 2500
½	23.8	44.5	50.8	50.8	50.8	60.4	60.4	66.8
¾	31.8	54.0	63.5	63.5	63.5	66.7	66.7	73.1
1	36.5	63.5	69.9	69.9	69.9	76.2	76.2	82.5
1 ¼	46.0	73.0	79.4	79.4	79.4	85.8	85.8	101.6
1 ½	52.4	82.6	92.1	92.1	92.1	95.3	95.3	114.3
2	73.2	101.6	108.0	108.0	108.0	139.7	139.7	143.0
2 ½	85.9	120.6	127.0	127.0	127.0	161.9	161.9	165.1
3	107.8	133.4	146.1	146.1	146.1	165.1	171.5	193.8
4	131.8	171.5	177.8	174.7	190.5	203.2	206.5	231.9
5	152.4	193.8	212.8	209.5	238.2	244.6	250.9	276.3
6	190.5	219.1	247.7	244.5	263.6	285.8	279.4	314.5
8	238.3	276.3	304.8	301.7	317.5	355.6	349.3	384.3
10	285.8	336.6	358.8	355.6	396.9	431.8	431.8	473.2
12	342.9	406.4	419.1	415.9	454.1	495.3	517.6	546.1
14	374.7	447.7	482.6	479.5	489.0	517.6	574.7	-
16	425.5	511.2	536.6	533.4	562.0	571.5	638.2	-
18	489.0	546.1	593.7	590.6	609.6	635.0	701.8	-
20	533.4	603.3	650.9	644.5	679.5	695.5	752.5	-
24	641.4	714.4	771.6	765.3	787.4	835.1	898.6	-

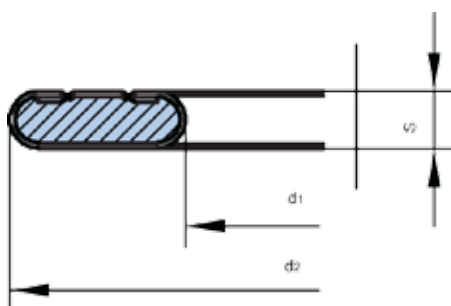




METAL JACKETED GASKET DIMENSION TO ASME B16.20

(used with ASME/ANSI B 16.47 Series A flanges)

NPS (inch)	d_1 (mm)	OUTSIDE DIAMETER - d_2 (mm)				
		Class 150	Class 300	Class 400	Class 600	Class 900
26	673.1	771.6	831.8	828.8	863.6	879.6
28	723.9	828.8	895.3	889.0	911.3	943.1
30	774.7	879.6	949.4	943.1	968.5	1006.6
32	825.5	836.7	1003.3	1000.2	1019.3	1070.1
34	876.3	987.5	1054.1	1051.0	1070.1	1133.6
36	927.1	1044.7	1114.5	1114.5	1127.2	1197.1
38	977.9	1108.2	1051.0	1070.1	1101.8	1197.1
40	1028.7	1159.0	1111.2	1124.0	1152.6	124.0
42	1079.5	1286.1	1162.0	1174.7	1216.1	1298.7
44	1130.3	1273.3	1216.1	1228.8	1267.0	1365.2
46	1181.1	1324.1	1270.0	1286.0	1324.1	1432.0
48	1231.9	1381.2	1320.8	1343.1	1387.6	1482.8
50	1282.7	1432.0	1374.9	1400.3	1444.7	-
52	1333.5	1489.2	1425.7	1451.1	1495.5	-
54	1384.3	1546.3	1489.2	1514.6	1552.7	-
56	1435.1	1603.5	1540.0	1565.4	1603.5	-
58	1485.9	1660.6	1590.8	1616.2	1660.6	-
60	1535.7	1711.4	1641.6	1679.7	1730.5	-





c/ Galileo 8 - P.I. Can Estella

08635 St. Esteve Sesrovires

Barcelona, España

Tel. +34 937 715 910 - Fax +34 937 715 319

E: info@calvosealing.com

www.calvosealing.com



REVIEW 09/27/2012

